

Access to Akita Nairiku Line

By plane

Tokyo (Haneda Airport) (around 1 hour 10 minutes - 1 hour 20 minutes) **Odate Noshiro Airport**

Contact / ANA Domestic Reservation and Information Center 0570-029-222

[Limousine Bus]

Odate Noshiro Airport - Takanosu Station (about 15 minutes)

*The schedule may change due to weather conditions, road conditions, airplane arrival delays, etc. Thank you in advance for your understanding.

Contact / Shuhoku Taxi Odate Office 0186-42-5454

By train

*The railway information is based on the information on June, 2021.

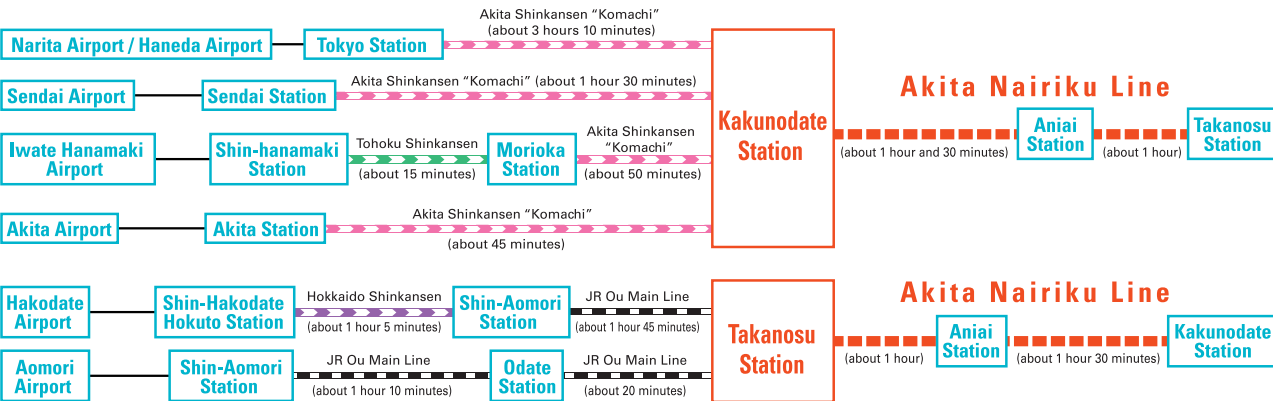
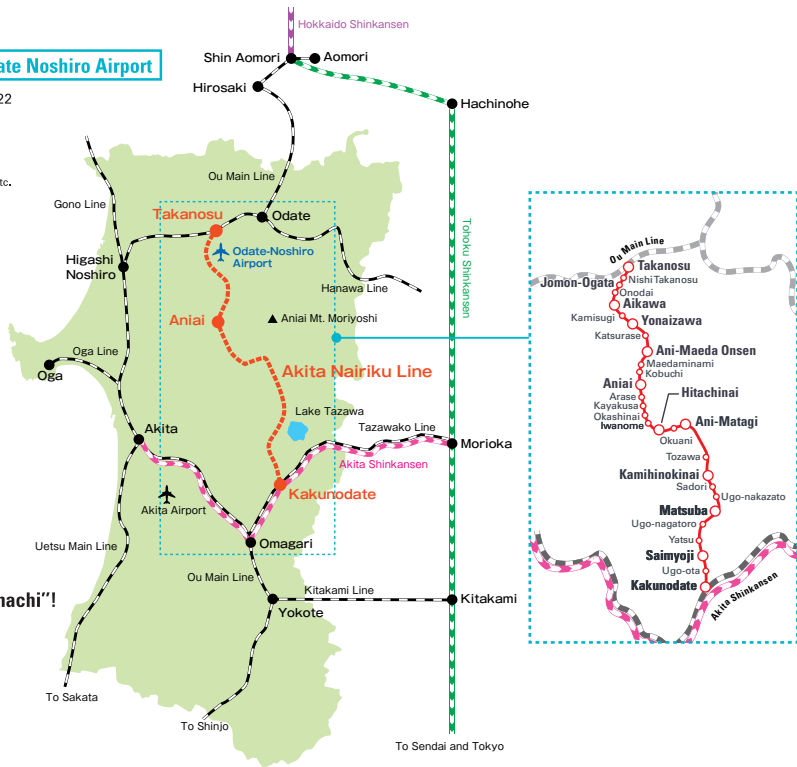
*The estimated travel time is provided based on the transit patterns on each route. The time required to reach your destination may vary depending on the type of train used and the date and time of travel. When traveling, please ask at the station window in advance or check the JR timetable.



Akita Shinkansen E6 series "Komachi"

Let's go to Akita Prefecture with the Akita Shinkansen "Komachi"!

To transfer to Akita Nairiku Line, please exit JR Kakunodate Station then Akita Nairiku Line Station is on your right.



About sightseeing

[Semboku City]

[Kakunodate Area]

Semboku City Tourist Information Center

"Kakunodate Station Square Storehouse"

☎0187-54-2700

[Kitaakita City]

Kitaakita City Tourist Information Center (Kitaakita

City Tourism and Local Produce Association)

☎0186-62-1851



About train

[Akita Nairiku Line]

Akita Nairiku Jukan Railway Co., Ltd.

☎0186-82-3231

(Excluding Saturdays, Sundays and holidays)

[Inquiries on Saturdays, Sundays and holidays]

Takanosu Station 0186-63-0643 / Aniai Station 0186-82-2136

Kakunodate Station 0187-54-3758



For details, please visit the website of Akita Nairiku Line.

[Akita Nairiku Line](#)



Let's ride the
SMILE RAIL!
-Meeting the original landscape of Japan-





Let's go on a trip to experience the scenery and excitement that can only be found on the local railway "Akita Nairiku Line".

The Akita Nairiku Jukan Railway (Akita Nairiku Line) connects Takanosu Station in Kitaakita City in the northern area of Akita Prefecture to Kakunodate Station in Semboku City.

The railway is also known as the "Smile Rail".

Although there are no urban spots or trendy shops along the railway route, the beautiful scenery of the traditional Satoyama villages, bountiful food culture and history, and traditional events can be found here.

The fascinating scenery and excitement will greet travelers who use the Smile Rail in any season of the year.

Also, the time that flows slowly and the smiles of everyone that you meet will definitely make you smile as well.

Now, let's embark on a trip full of smiles and pleasant emotions.

Let's go on the SMILE RAIL! CONTENTS

- 2 SPRING
- 3 SUMMER
- 4 AUTUMN, Aniai Walk
- 5 WINTER
- 6 Souvenir & Hotels

- Operating hours
- Regular holidays
- Best time to visit
- Fee
- Contact information
- Transportation guide



KAKUNODATE sta.

Weeping Cherry Blossom of Kakunodate

Cherry blossom viewing in Little Kyoto of Tohoku
Kakunodate was a residential area of samurai warriors in the Edo period about 400 years ago. Many historic buildings are still standing here, and it is also known for its weeping cherry tree.

- 0187-54-2700
(Semboku City Tourist Information Center "Kakunodate Station Square Storehouse")
- About 20 minutes on foot from Kakunodate Station (Bukeyashiki-dori)



ANIAI sta.

Mt. Moriyoshi

The mountain covered with beautiful flowers

From spring to summer, Mt. Moriyoshi becomes a treasure trove of a diversity of wildflowers and alpine plants. The top of the mountain can be reached by gondola cable car in about 20 minutes, from where visitors can enjoy trekking easily.

- 0186-82-3311 (Ani Ski Resort)
- About 20 minutes by car from Aniai Station

YATSU sta.

The town of Asian fawnlily

A flower carpet as the sign of spring

Visitors can find the largest natural habitat in Japan where the rare Asian fawnlily grows within a 20-hectare chestnut orchard that grows the Saimyoji chestnut, a local specialty.

- 8:00 - 17:00
- Mid-April to early May
- 300 yen
- Katakuri-kan (0187-47-3535)
- About 5 minutes on foot from Yatsu Station



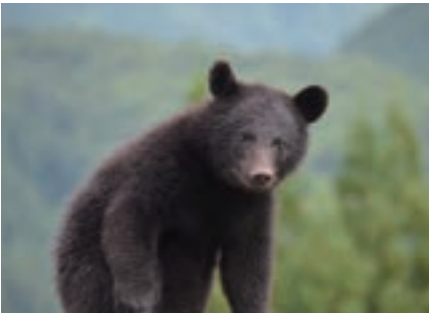
ANIMATAGI sta.

Bear Zoo "Kumakuma En"

Interact with cute and adorable cubs

Visitors can see Japanese black bears and brown bears up close in this bear-only zoo. Bear feed is sold in the zoo, so you can also feed the bears.

- 9:00 - 16:00 (last entry at 15:30)
- Late April - early November
- Adult: 700 yen, elementary and junior high school students: 200 yen
- 0186-84-2626 "Japanese Only"
- About 8 minutes by car from Animatagi Station (Shuttle bus is available with prior reservation. Please contact the front desk of Utto Onsen Matagi-no-Yu 0186-84-2612)



After the winter of Akita, colorful flowers bloom one after another, as if they have been longing for spring.

We are introducing the unparalleled beauty of spring, including places of spring blooms and various leisure spots along the railway line.

Spring



KAKUNODATE sta.

Tatetsuya (Kakunodate Sakura Leatherwork Center)

Let's walk around the town in kimono

Antique kimono rental and dressing service is available at the product center that sells local crafts. Let's enjoy a leisurely stroll in a charming kimono.

- 10:00 - 17:00 (reservation required)
- Open year - round
- 5,000 yen
- 0187-63-6751 (for reservation only, Kimono Tabi Shanari)
- About 10 minutes on foot from Kakunodate Station





MATSUBA sta.

Lake Tazawa

A mysterious lake with a legend

At 423.4 meters deep, it is the deepest lake in Japan. The statue of Princess Tatsuko, known for her legendary beauty, adorns this lake's cobalt blue water surface. Visitors are recommended to view the statue from a pleasure boat.

- ☎ 0187-43-2111 (Semboku City Tazawa Lake Tourist Information Center "Folake")
- 🚗 About 15 minutes by car from Matsuba Station

NISHITAKANOSU sta.

Yoneshiro River Fireworks Festival

The earliest fireworks festival in the northern Akita of the season.

The event is held in early July as one of the largest fireworks festivals in Akita Prefecture. About 3,000 fireworks color the surface of the Yoneshiro River. There are many highlights in the event, including continuous fireworks and ground-effect fireworks.

- ☎ 0186-62-1851 (Kitaakita Yoneshirogawa Fireworks Festival Executive Committee)
- 🚗 About 15 minutes on foot from Nishi-Takanosu Station



Jomon Ogata

World Cultural Heritage Isedotai Site

As one of the archaeological sites forming the "Jomon Prehistoric Sites in Northern Japan", Isedotai was registered as a UNESCO World Cultural Heritage Site in July 2021. No other archaeological sites in Japan have four stone circles in one place. *The site will be open from late April to the end of October and will be closed during the winter season.

- ☎ 0186-84-8710 (Isedotai Jomonkan Museum)
- 🚶 Approximately 15 minutes on foot from Jomon Ogata Station
- 🕒 9:00-17:00 📅 Mondays (Closed on the following day if Monday is a public holiday)

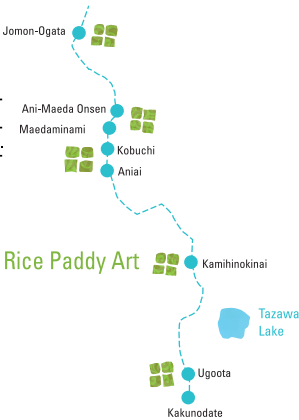
KAKUNODATE~UGOOTA, KAMIHINOKINAI.
ANIAI~KOBUCHI, MAEDAMINAMI~ANI-MAEDA ONSEN & JOMON-OGATA sta.

Rice Paddy Art

Giant art seen from the train windows

The "Rice Paddy Art" is a variety of patterns that emerge from the various colorful seedlings planted on the rice fields along the Nairiku Line. This view can be seen from July to September. There are five art sites along the railway route!

- ☎ 0186-82-3231 (Akita Nairiku Jukan Railway Co., Ltd.)



Enjoy a dazzling summer in Akita with its lush mountains and greenery of the countryside.

Visitors can hear the cooling songs of the cicadas

and frogs along with the murmuring of the rivers.

During the Bon Festival period, visitors can enjoy summer festivals and fireworks held in various locations and many people visit their hometowns to enjoy their short summer vacation.



ANIAI sta.

Ani Fireworks and Lantern Floats

Enlightens a summer night with lanterns and fireworks

The "Toro Nagashi" (floating lanterns) is a traditional event that is held in various parts of Japan. The one on the Ani River is held every year on August 16, and a fireworks festival is held on the same day.

- ☎ 0186-82-2220 (Ani Fireworks Executive Committee)
- 🚶 About 5 minutes on foot from Aniai Station



KAKUNODATE sta.

Gottso-tamatebako Lunch Box Train

Enjoy your time with local "feast" in an event train

Passengers can enjoy various seasonal Gottso (means "feast" in local dialect) made by local farmers along the railway. Passengers can also enjoy having fun conversations with them.

*Please inquire about the operation date.

- 🎫 Adult 8,000 yen, child 6,750 yen (including one-day Nairiku Line ticket and meals)
- ☎ 0186-82-3231 (Akita Nairiku Jukan Railway Co., Ltd.)
- 🚶 Depart from Kakunodate Station



Depart from the station!

Aniai Walk

There are many interesting spots in the area around Aniai Station, as the middle point of Akita Nairiku Line, making it a fun place for a stroll. Why don't you get off the train and plan a trip with the station as your base?



The Bell of Happiness

A symbol of Aniai Station

Aniai Station is characterized by a triangular roof with the number 4 as its motif because it is located at 40 degrees North latitude. If you ring the cute bell placed next to the entrance, you may be blessed with happiness.

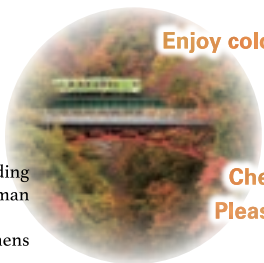
- ☎ 0186-82-2136 (Aniai Station)

Exploring the Temples

Remember the glory of the largest copper mine of Japan

Aniai, which once flourished as a mining town during the most prosperous period in Japan, was home to workers from all over the country. Therefore, there are many temples of many different denominations that survive the passage of time, and visitors can see valuable historical sites and Buddha statues.

- 📍 Within walking distance from Aniai Station



Enjoy colorful autumn in Akita, where the leaves turn red, yellow, and orange.

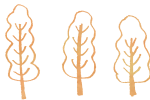
The fields are blessed with bountiful crops that are ready to be harvested.

Cherish the perfect season for a leisurely stroll.

Please also enjoy the "Autumn Leaves Hunting",

an event that is unique to Japan

that loves the four seasons.



Autumn



KAKUNODATE sta.

Dakigaeri Gorge

A superb and dynamic view

On this scenic spot, the bluish mountain stream and autumn leaves of the primeval forest on steep cliff create a beautiful contrast.

Visitors can see the natural beauty up close from the promenade.

*Closed from late November to mid-April. The road from the Mikaeri Waterfall is closed year-round.

- ☎ 0187-54-2700 (Semboku City Tourist Information Center "Kakunodate Station Square Storehouse")
- 🚗 About 15 minutes by car from Kakunodate Station

Kitaakita Mt. Moriyoshi Welcome Station

Place for gathering sightseeing information inside the station

Located on the second floor of Aniai Station, this spot introduces the charms of Mt. Moriyoshi by using projection mapping and a diorama. Visitors can also relax at the train viewing seats.

- ☎ 0186-82-2136 (Aniai Station)

Aniai Commune

Let's find painted stones

A community space open for everyone in front of Aniai Station. Visitors can play a game called "WA ROCK", in which to hide and seek painted stones around the town.

- 🕒 9:00 - 18:00
- 📅 Mondays
- ☎ 0186-67-7030 (Aniai Commune)
- 🚶 One-minute walk from Aniai Station



Ani River Park

Nice photo shooting spot!

This park is located right behind the Aniai station, and there are close to 300 trees such as cherry and crape myrtle. During the flower blooming season, the view from the train is a firm favorite with locals and visitors alike.

- ☎ 0186-62-1851 (Kitaakita city kanko bussan association)
- 🚶 About 5 minutes on foot from Aniai Station



 KAMIHINOKINAI sta.

Paper Balloon Festival of Kamihinokinai

A fun festival that welcomes the first full moon of the year

In this traditional event that is held on February 10 every year, giant paper balloons are flown based on the principle of the hot-air balloon. It is a romantic event for everyone to enjoy paper balloons with paintings of beautiful women or samurai warriors that dance in the night sky.

- ☎ 0187-42-8480 (Tazawako and Kakunodate Tourism Association Nishiki Branch)
- 📍 About 7 minutes walk from the Kamihinokinai Station



 ANIMATAGI sta.

Matagi no Yume (Dream of Matagi)

Flavorful Doburoku, unrefined Japanese sake

This Japanese sake is prepared by hand using the spring water of Mt. Moriyoshi and Akita Komachi rice. The pleasant taste of rice remains in the Sake. Visitors can purchase this item at the “Utto Onsen Matagi-no-Yu” store (450 yen per 180 ml). *The sake is sold in bulk, so please bring a container if you wish to purchase it.

- ☎ 0186-84-2612 (Utto Onsen Matagi-no-Yu)
- 📍 About 5 minutes by car from Ani Matagi Station (Free transfer available, reservation required by phone)



Ani, the birthplace of Matagi hunters



The Ani region, located at the southern foot of Mt. Moriyoshi, has long been known as the “Village of the Matagi Hunters”.

“Matagi Hunters” are those who live by hunting large animals, such as bears, in the traditional way. Currently there are only a handful of active Matagi hunters, but visitors can visit the only Matagi Museum in Japan to know more about the Matagi culture and customs that have been rooted in this region, as well as a manufacturing facility of a knife called “Nagasa”, which is a hunting tool for Matagi hunters.

Also, the Matagi costume can be borrowed free of charge at Aniai Station. Why don't you take a commemorative photo or stroll around the station in the costume?

- ☎ 0186-82-3231 (Akita Nairiku Jukan Railway Co., Ltd.)

Akita is known for its freezing winter.

However, during this time, the area becomes silvery-white, and winter may be the most beautiful season when Akita shines.

Enjoy the traditional culture in a vast nature brought up by the snowy land where time passes slowly.

Please experience the authentic charms of Akita.

Winter

 ANIAI sta.

Mt. Moriyoshi's Juhyo

Let's appreciate the natural beauty of winter

Juhyo formed by ice and snow attached to Maries' fir trees.

The rime-covered trees are called “Snow Monster” because of their mysterious and dynamic appearance.

- 📅 Late January - late February
- ☎ 0186-62-1851 (Kitaakita City Tourism and Local Produce Association)
- 📍 About 20 minutes by car from Aniai Station

Juhyo Night Viewing

Enjoy an evening tour to go up Mt. Moriyoshi in a snowcat that is equipped with a cabin and watch the Juhyo up close.

If the weather is good, participants can enjoy a starry sky and night view of the surroundings. (Reservation required)

- 📅 Early February - early March
- ☎ Adult: 2,500 yen, Child 1,500 yen (with a hot drink)
- ☎ 0186-82-3311 (Mt. Moriyoshi Ani Ski Resort)




Enjoy your trip along the Akita Nairiku Line even more

Choose souvenirs that will make your trip even more exciting.

We will introduce various options together with unique inns where visitors can enjoy the local charm.

Souvenir

 SAIMYOJI & YATSU sta.


Saimyoji Chestnut

Perfect as a souvenir that brings the taste of autumn.

This is the largest chestnut in Japan with the size of an infant's fist. Let's enjoy picking up the famous chestnuts at the local farm. Please contact the plantation directly about the operation time and other details.

*May be canceled due to weather, plant conditions, or bear-caused damages.

- ☎ 0187-47-3046 (Sasaki Chestnut Orchard) Reservation required
- 📍 About 10 minutes on foot from Yatsu Station (Sasaki Chestnut Orchard)

 ANIAI, TAKANOSU & KAKUNODATE sta.

Akita Nairiku Line's Original Goods

With these, you'll also be a part of the Nairiku Line!

There are many popular original goods of the Akita Nairiku Line. There are muffler towels with train pictures and route maps, and pin badges that have the train's motif.

- ☎ 0186-82-3666 (Aniai Station Tourist Information Desk)


 ANI-MAEDA ONSEN sta.

Miura-an's “Mochimochi Triangle Butter Mochi”

A fluffy and sweet local confectionery. The locals have loved this sweet rice cake for a long time. Enjoy the fluffy texture, gentle sweetness, and creamy butter flavor.

Sold at Ani-Maeda Onsen Station, etc.

- ☎ 0186-82-3666 (Aniai Station Tourist Information Desk)

 ANIAI, TAKANOSU & KAKUNODATE sta.

Original Dorayaki

Its seasonal packaging is also worth to notice.

This dorayaki, with its cute original package and brand image, is created in collaboration with a long-established Japanese confectionery shop of Akita.

This item can be purchased at Aniai, Takanosu, Kakunodate stations, and in-train sales.

- ☎ 0186-82-3666 (Aniai Station Tourist Information Desk)

 ANIAI sta.

Cheese Manju “Okashinai”

Sweets that make everyone smiles

The cheese inside is wrapped in white bean paste, and the Manju is baked until fragrant. The smiley face as the brand symbol is adorable. This product is sold at the Aniai Station Tourist Information Center.

- ☎ 0186-82-3666 (Aniai Station Tourist Information Desk)

Hotel

 ANI-MAEDA ONSEN sta.


Quince Moriyoshi

The only train station building in Akita Prefecture that is equipped with a hot spring inn.

Guests can stay at a reasonable price at the hot spring inn attached to the Ani-Maeda Onsen Station.

The “Train Viewing Room”, from where guests can see the Nairiku trains, is popular. Day-trip bathing is also available.

- ☎ 0186-60-7000
- 📍 Inside Ani-Maeda Onsen Station Building

 Kakunodate

Kakunodate Onsen “Kayokan”

Kayokan is an inn surrounded by lush vegetation of Kakunodate, known as Little Kyoto of the Tohoku region, and treats guests with warm hospitality. Free shuttle buses between Kakunodate Station and the inn are available.

- ☎ 0187-55-5888
- 📍 25 minutes by bus from Kakunodate Station.




 ANIMATAGI sta.

Utto Onsen (Hot Spring) Matagi-no-Yu

An inn where you can experience the Matagi culture

In this inn, guests can enjoy luxurious countryside cuisine, mainly “Kuma nabe, bear hot pot”, a classic Matagi cuisine. Guests can enjoy the beautiful seasonal scenery from the outdoor bath. There is also a Matagi Museum in the vicinity.

- ☎ 0186-84-2612
- 📍 About 5 minutes by car from Ani Matagi Station (Free shuttle available; reservation required)

 UGONAGATORO sta.

Farmhouse Inn Seisetsukan

A charming local inn

An inn where guests can feel at home as if they are visiting a relative's house in the countryside.

Guests can enjoy the dinner prepared carefully by the owners, a mother and her daughter.

- ☎ 0187-48-2914
- 📍 About 15 minutes on foot from Ugo-Nagatoro Station

